

K139
1920

UNIVERSITY OF ILLINOIS

KANSAS STATE AGRICULTURAL COLLEGE



A Book of Pictures

Kansas State Agricultural College

W. M. Jardine, President

MANHATTAN, KANSAS

Calendar for 1920-1921

FIRST SEMESTER, 1920-1921

- Sept. 6, Monday.—Special courses for auto-mechanics, tractor operators, machinists, blacksmiths, foundrymen, and carpenters begin.
- Sept. 13, Monday.—Admission and registration of students begin at 8 p. m.
- Sept. 14, Tuesday.—Housekeepers' Course begins; registration at 8 a. m.
- Sept. 15, Wednesday.—Registration of students closes at 11 a. m.
- Sept. 15, Wednesday.—Opening convocation, 11 a. m. to 12 m.
- Sept. 15, Wednesday.—All classes meet according to schedule, beginning at 1 p. m.
- Nov. 24, Wednesday.—Thanksgiving vacation begins at 12 m.
- Nov. 27, Saturday.—Thanksgiving vacation closes at 6 p. m.
- Dec. 21, Tuesday.—Housekeepers' Course closes at 12 m.
- Dec. 21, Tuesday.—Winter vacation begins at 6 p. m.
- Jan. 3, 1921, Monday.—Special courses for auto-mechanics, electricians, tractor operators, machinists, blacksmiths, foundrymen, carpenters, and radio operators begin.
- Jan. 4, Tuesday.—Winter vacation closes at 6 p. m.
- Jan. 10, Monday.—Short Course in Agriculture and Creamery Short Course begin.
- Jan. 29, Saturday.—First semester closes at 11 a. m.

SECOND SEMESTER, 1920-1921

- Feb. 1, Tuesday.—Admission and registration of students begin at 8 a. m.
- Feb. 1, Tuesday.—Housekeepers' Course begins; registration at 8 a. m.
- Feb. 2, Wednesday.—Registration of students closes at 11 a. m.
- Feb. 2, Wednesday.—All classes meet according to schedule, beginning at 1 p. m.
- Feb. 7 to 12, Monday to Saturday.—Farm and Home Week.
- Feb. 22, Tuesday.—Holiday, Washington's Birthday.
- Mar. 5, Saturday.—Short Course in Agriculture and Creamery Short Course close at 12 m.
- May 10, Tuesday.—Housekeepers' Course closes at 12 m.
- May 30, Monday.—Holiday, Decoration Day.
- June 2, Thursday.—Commencement Day.

SUMMER SCHOOL, 1921

- June 3, Friday.—Registration of students for Summer School begins at 8 a. m.
- June 4 to Aug. 5, Saturday to Friday.—Summer School in session, nine weeks.
-

Courses in Agriculture, Veterinary Medicine, Engineering,
Home Economics and General Science



Early to eight o'clock classes—a good start



Anderson Hall—the center of college life



May day, 1920—more college life



Coming and going on the campus



College sheep—none of 'em black



Lambs in May time



A glimpse of the Auditorium, Home Economics Hall, and the Library tower



EVANS (CAPT.) TURNER LONDON BECKETT SCHULZ (CO.)
BILTINGS WATSON LEITER W.

K. S. A.

THE AGG

A bunch of r



KNIGHT

BAYLEY

MORLACHER

GREEN

COLINSELL

FROST

NEELY

GALLAGHER

1920

*J.E. Colburn
K.S.A.C.*

TRACK TEAM
stars—and winners



This is how we keep 'em—



down on the farm



Waters Hall—the home of agriculture



The School of Agriculture



Why girls and boys leave home



The College honors a leader in agriculture



Everybody gone to class



Even the sky helps make the campus beautiful



The Auditorium—home of music and drama



Home Economics Hall—home of homes



THE COLLEGE CHORAL
Ready to give "Hiawatha's Wedding Feast,"



ION AND ORCHESTRA
S. Coleridge Taylor, May Festival, 1920



A part of the Engineering shops



A view down the hillside



The Library



Horticulture



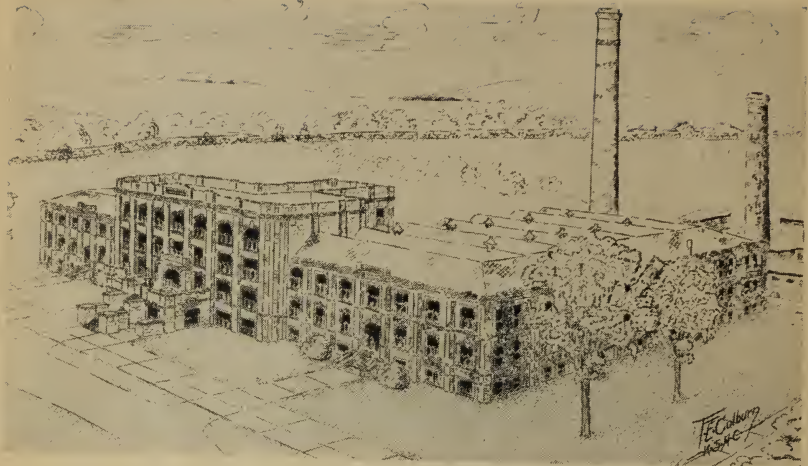
Coming home from "The Hill"



Play ball!



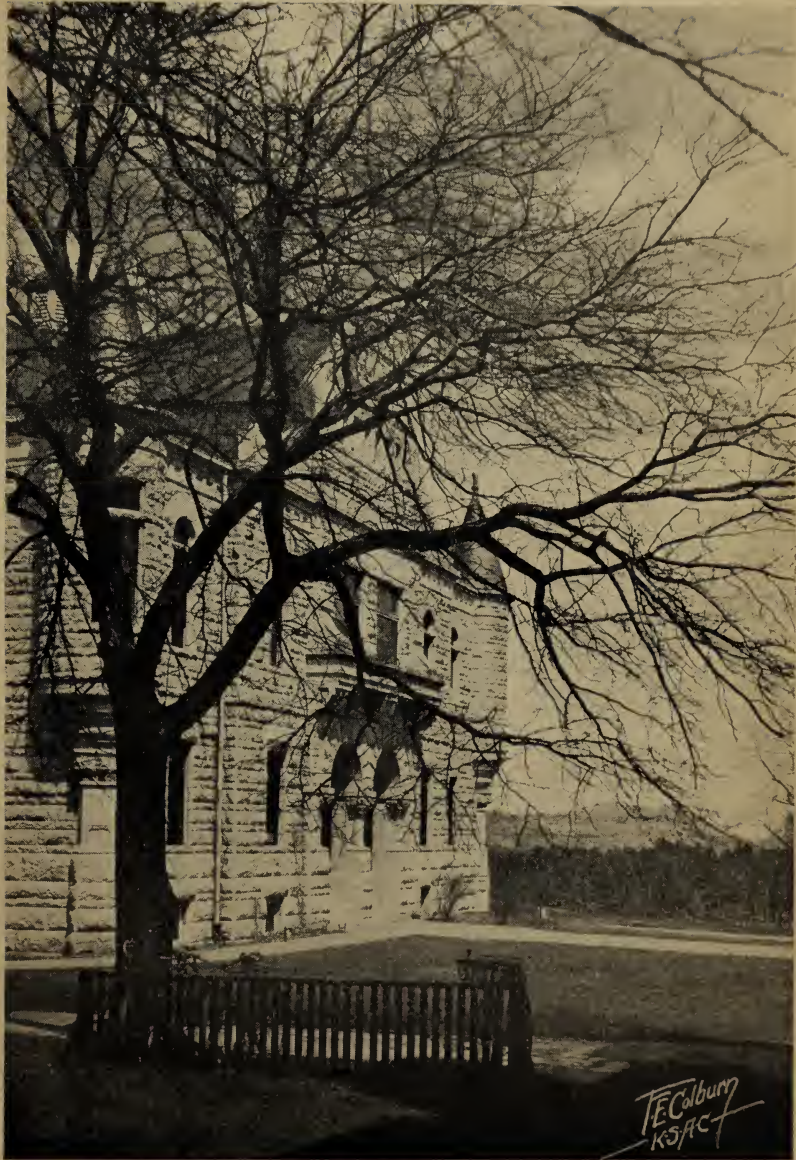
Dance all!



New Engineering building—home of the most rapidly growing engineering school in the West



Gym!



T. E. Colburn
KSAC

Seeing something through a tree



Over the hills and away



Sometimes you have to hurry



The parting of the ways—both of which lead to chapel



SNAPP (CF)
AGNEW (RF)

QUINLAN (SS)
SWINGLE (F)

GUILFOYLE (C)
DICKERSON (1B)

KSA

MISSOURI VALLEY

Won, 14; lost, 4



VENGER (COACH) BURTON (2B) W. GOWELL (RF) E. GOWELL (LF)
MAGRATH (P) (CAPT) OTTO (P) MERSHON (3B)

1920

CHAMPIONS, 1920
average, .777

Handwritten signature and date:
T. J. [unclear]
1920



From the edge of the hill



Where flowers and fruits are taught to grow



Having their—



pictures taken



The power center of the College

THE Kansas State Agricultural College offers to the citizens of Kansas, especially to young men and young women, the finest of training along lines of agriculture, veterinary medicine, engineering, home economics and general science. The purpose of this booklet of photographs is to introduce the College to you. It is hoped that you will follow up the introduction by writing for catalogs and information along the lines in which you are particularly interested. Such information will be sent to you gladly—and promptly.

Address, THE PRESIDENT,
K. S. A. C.,
Manhattan, Kan.

